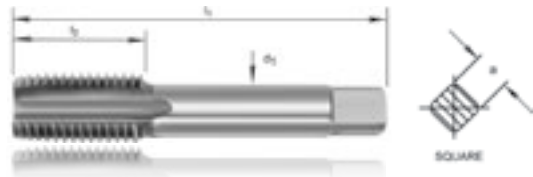


HSGT TAPS

- HAND
- SPIRAL POINT
- SPIRAL FLUTE
- PIPE

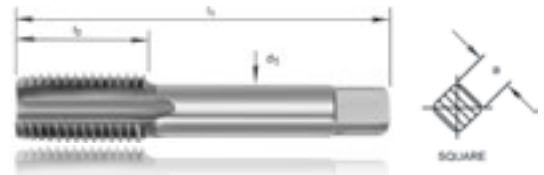


METRIC STRAIGHT FLUTE HAND TAPS

GROUP	GROUND THREAD - COARSE
Surface Finish	Bright
Type Of Thread	Metric Coarse Iso Thread
Tap Tolerance	Class 2 for 6h Fit
Flute Type	Straight Flutes
Material	HSS
Application	For Hand or Machine Tapping of Through or Blind Holes

D	PITCH	L1	L2	D1	A	TAPER	INTER	BOTTOM
M2	0.4	41	8	2.5	2	5010201	5010202	5010203
M2.5	0.45	44.5	9.5	2.8	2.24	5010251	5010252	5010253
M3	0.5	48	11	3.15	2.5	5010301	5010302	5010303
M3.5	0.6	50	13	3.55	2.8	5010351	5010352	5010353
M4	0.7	53	13	4	3.15	5010401	5010402	5010403
M4.5	0.75	53	13	4.5	3.55	5010451	5010452	5010453
M5	0.8	58	16	5	4	5010501	5010502	5010503
M6	1	66	19	6.3	5	5010601	5010602	5010603
M7	1	66	19	7.1	5.6	5010701	5010702	5010703
M8	1.25	72	22	8	6.3	5010801	5010802	5010803
M9	1.25	72	22	9	7.1	5010901	5010902	5010903
M10	1.5	80	24	10	8	5011001	5011002	5011003
M11	1.5	85	25	8	6.3	5011101	5011102	5011103
M12	1.75	89	29	9	7.1	5011201	5011202	5011203
M14	2	95	30	11.2	9	5011401	5011402	5011403
M16	2	102	32	12.5	10	5011601	5011602	5011603
M18	2.5	112	37	14	11.2	5011801	5011802	5011803
M20	2.5	118	37	14	11.2	5012001	5012002	5012003
M22	2.5	130	38	16	12.5	5012201	5012202	5012203
M24	3	135	45	18	14	5012401	5012402	5012403
M27	3	138	45	20	16	5012701	5012702	5012703
M30	3.5	151	48	20	16	5013001	5013002	5013003
M33	3.5	162	51	22.4	18	5013301	5013302	5013303
M36	4	170	57	25	20	5013601	5013602	5013603
M39	4	170	60	28	22.4	5013901	5013902	5013903
M42	4.5	187	60	28	22.4	5014201	5014202	5014203
M45	4.5	187	67	31.5	25	5014501	5014502	5014503
M48	5	200	67	31.5	25	5014801	5014802	5014803
M52	5	200	70	35.5	28	5015201	5015202	5015203

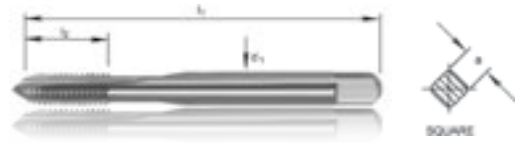
SETS ALSO AVAILABLE



METRIC STRAIGHT FLUTE HAND TAPS

GROUP	GROUND THREAD
Surface Finish	Bright
Type Of Thread	Metric Fine Iso Thread
Tap Tolerance	Class 2 for 6h Fit
Flute Type	Straight Flutes
Material	HSS
Application	For Hand or Machine Tapping of Through or Blind Holes

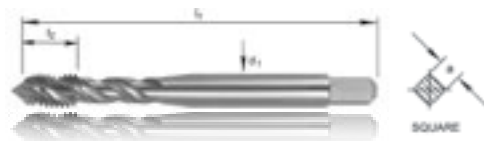
D	PITCH	L1	L2	D1	A	TAPER	INTER	BOTTOM
M8	1	69	19	8	6.3	5110801	5110802	5110803
M10	1	76	20	10	8	5111001	5111002	5111003
M10	1.25	76	20	10	8	5111011	5111012	5111013
M12	1.25	84	24	9	7.1	5111201	5111202	5111203
M12	1.5	89	29	9	7.1	5111211	5111212	5111213
M14	1.25	90	25	11.2	9	5111401	5111402	5111403
M14	1.5	95	30	11.2	9	5111411	5111412	5111413
M16	1.5	102	32	12.5	10	5111601	5111602	5111603
M18	1.5	104	29	14	11.2	5111801	5111802	5111803
M20	1.5	104	29	14	11.2	5112001	5112002	5112003
M22	1.5	113	33	16	12.5	5112201	5112202	5112203
M24	2	120	35	18	14	5112411	5112412	5112413



METRIC GUN NOSE MACHINE TAPS

GROUP	GROUND THREAD
Surface Finish	Bright
Type Of Thread	Metric Iso Course Thread
Tap Tolerance	Class 2 for 6h Fit
Flute Type	Spiral Point
Material	HSSE-V
Application	For Machine Tapping of Through Holes

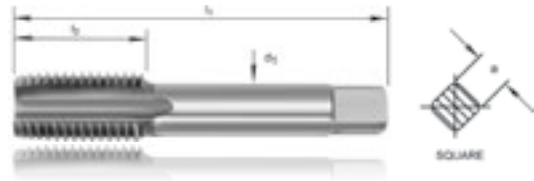
D	PITCH	L1	L2	D1	A	PART number
M3	0.5	48	11	3.15	2.5	5080300
M3.5	0.6	50	13	3.55	2.8	5080350
M4	0.7	53	13	4	3.15	5080400
M5	0.8	58	16	5	4	5080500
M6	1	66	19	6.3	5	5080600
M7	1	66	19	7.1	5.6	5080700
M8	1.25	72	22	8	6.3	5080800
M9	1.25	72	22	9	7.1	5080900
M10	1.5	80	24	10	8	5081000
M12	1.75	89	29	9	7.1	5081200
M14	2	95	30	11.2	9	5081400
M16	2	102	32	12.5	10	5081600
M18	2.5	112	37	14	11.2	5081800
M20	2.5	112	37	14	11.2	5082000
M22	2.5	118	38	16	12.5	5082200
M24	3	130	45	18	14	5082400
M27	3	135	45	20	16	5082700
M30	3.5	138	48	20	16	5083000
M33	3.5	151	51	22.4	18	5083300
M36	4	162	57	25	20	5083600



METRIC SPIRAL FLUTE MACHINE TAPS

GROUP	GROUND THREAD
Surface Finish	Bright
Type Of Thread	Metric Iso Course Thread
Tap Tolerance	Class 2 for 6h Fit
Flute Type	35° Spiral Flute
Material	HSSE-V
Application	For Machine Tapping of Blind Holes

D	PITCH	L1	L2	D1	A	PART number
M3	0.5	48	11	3.15	2.5	5100300
M3.5	0.6	50	13	3.55	2.8	5100350
M4	0.7	53	13	4	3.15	5100400
M5	0.8	58	16	5	4	5100500
M6	1	66	19	6.3	5	5100600
M7	1	66	19	7.1	5.6	5100700
M8	1.25	72	22	8	6.3	5100800
M9	1.25	72	22	9	7.1	5100900
M10	1.5	80	24	10	8	5101000
M11	1.5	85	25	8	6.3	5101100
M12	1.75	89	29	9	7.1	5101200
M14	2	95	30	11.2	9	5101400
M16	2	102	32	12.5	10	5101600
M18	2.5	112	37	14	11.2	5101800
M20	2.5	112	37	14	11.2	5102000
M22	2.5	118	38	16	12.5	5102200
M24	3	130	45	18	14	5102400

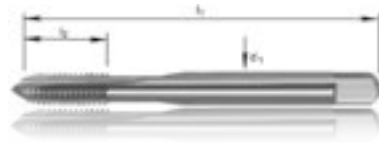


BSW STRAIGHT FLUTE HAND TAP

GROUP	GROUND THREAD
Surface Finish	Bright
Type Of Thread	Whitworth Thread
Tap Tolerance	Class 2 for Medium Fit
Flute Type	Staight Flutes
Material	HSS
Application	For Hand or Machine Tapping of Through or Blind Holes

D	PITCH	L1	L2	D1	A	TAPER	INTER	BOTTOM
3/32	48	44.5	9.5	2.8	2.24	5210241	5210242	5210243
1/8	40	48	11	3.15	2.5	5210321	5210322	5210323
5/32	32	53	13	4	3.15	5210401	5210402	5210403
3/16	24	58	16	5	4	5210481	5210482	5210483
1/4	20	66	19	6.3	5	5210641	5210642	5210643
5/16	18	72	22	8	6.3	5210791	5210792	5210793
3/8	16	80	24	10	8	5210951	5210952	5210953
7/16	14	85	25	8	6.3	5211111	5211112	5211113
1/2	12	89	29	9	7.1	5211271	5211272	5211273
9/16	12	95	30	11.2	9	5211431	5211432	5211433
5/8	11	102	32	12.5	10	5211591	5211592	5211593
3/4	10	112	37	14	11.2	5211911	5211912	5211913
7/8	9	118	38	16	12.5	5212221	5212222	5212223
1"	8	130	45	18	14	5212541	5212542	5212543
1.1/8	7	138	48	20	16	5212861	5212862	5212863
1.1/4	7	151	51	22.4	18	5213171	5213172	5213173
1.1/2	6	170	60	28	22.4	5213811	5213812	5213813
1.3/4	5	187	67	31.5	25	5214451	5214452	5214453
2"	4.5	200	70	35.5	28	5215081	5215082	5215083

SETS ALSO AVAILABLE



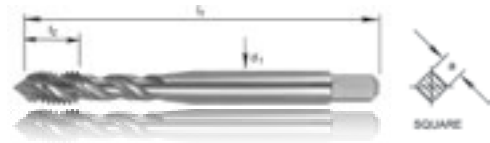
BSW GUN NOSE MACHINE TAP

GROUP	GROUND THREAD
Surface Finish	Bright
Type Of Thread	Whitworth Thread
Tap Tolerance	Class 2 for Medium Fit
Flute Type	Spiral Point
Material	HSS
Application	For Machine Tapping of Through Holes

D	TPI	L1	L2	D1	A	PART number
1/8	40	48	11	3.15	2.5	5260320
5/32	32	53	13	4	3.15	5260400
3/16	24	58	16	5	4	5260480
1/4	20	66	19	6.3	5	5260640
5/16	18	72	22	8	6.3	5260790
3/8	16	80	24	10	8	5260950
7/16	24	85	25	8	6.3	5261110
1/2	12	89	29	9	7.1	5261270
9/16	12	95	30	11.2	9	5261430
5/8	11	102	32	12.5	10	5261590
3/4	10	112	37	14	11.2	5261910
7/8	9	118	38	16	12.5	5262220
1"	8	130	45	18	14	5262540

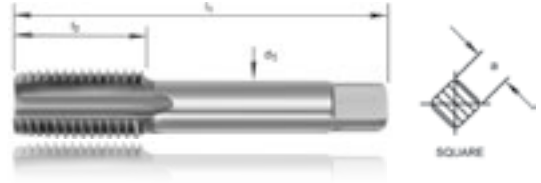


BSW SPIRAL FLUTE MACHINE TAP



GROUP	GROUND THREAD
Surface Finish	Bright
Type Of Thread	Whitworth Thread
Tap Tolerance	Class 2 for Medium Fit
Flute Type	35° Spiral Flute
Material	HSSE-V
Application	For Machine Tapping of Blind Holes

D	TPI	L1	L2	D1	A	PART number
1/8	40	48	11	3.15	2.5	5280320
5/32	32	53	13	4	3.15	5280400
3/16	24	58	16	5	4	5280480
1/4	20	66	19	6.3	5	5280640
5/16	18	72	22	8	6.3	5280790
3/8	16	80	24	10	8	5280950
7/16	24	85	25	8	6.3	5281110
1/2	12	89	29	9	7.1	5281270
9/16	12	95	30	11.2	9	5281430
5/8	11	102	32	12.5	10	5281590
3/4	10	112	37	14	11.2	5281910
7/8	9	118	38	16	12.5	5282220
1"	8	130	45	18	14	5282540

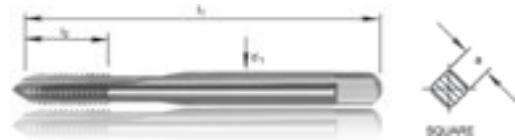


UNC STRAIGHT FLUTE HAND TAP

GROUP	GROUND THREAD
Surface Finish	Bright
Type Of Thread	Unified Coarse Thread
Tap Tolerance	Class 2 for 2b Fit
Flute Type	Straight Flute
Material	HSS
Application	For Hand or Machine Tapping of Through or Blind Holes

D	NOMINAL DIA.	TPI	L1	L2	D1	A	TAPER	INTER	BOTTOM
No. 5	3.18	40	48	11	3.15	2.5	5410321	5410322	5410323
No. 6	3.51	32	50	13	3.55	2.8	5410351	5410352	5410353
No. 8	4.17	32	53	13	4.5	3.55	5410421	5410422	5410423
No. 10	4.83	24	58	16	5	4	5410481	5410482	5410483
No. 12	5.49	24	62	17	5.6	4.5	5410551	5410552	5410553
1/4		20	66	19	6.3	5	5410641	5410642	5410643
5/16		18	72	22	8	6.3	5410791	5410792	5410793
3/8		16	80	24	10	8	5410951	5410952	5410953
7/16		14	85	25	8	6.3	5411111	5411112	5411113
1/2		13	89	29	9	7.1	5411271	5411272	5411273
9/16		12	95	30	11.2	9	5411431	5411432	5411433
5/8		11	102	32	12.5	10	5411591	5411592	5411593
3/4		10	112	37	14	11.2	5411911	5411912	5411913
7/8		9	118	38	16	12.5	5412221	5412222	5412223
1"		8	130	45	18	14	5412541	5412542	5412543
1.1/8		7	138	48	20	16	5412861	5412862	5412863
1.1/4		7	151	51	22.4	18	5413181	5413182	5413183
1.1/2		6	170	60	28	22.4	5413811	5413812	5413813

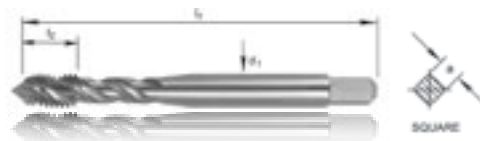
SETS ALSO AVAILABLE



UNC GUN NOSE MACHINE TAP

GROUP	GROUND THREAD
Surface Finish	Bright
Type Of Thread	Unified Coarse Thread
Tap Tolerance	Class 2 for 2b Fit
Flute Type	Spiral Point
Material	HSSE-V
Application	For Machine Tapping of Through Holes

D	NOMINAL DIA.	TPI	L1	L2	D1	A	PART number
No. 6	3.51	32	50	13	3.55	2.8	5450350
No. 8	4.17	32	53	13	4.5	3.55	5450420
No. 10	4.83	24	58	16	5	4	5450480
No. 12	5.49	24	62	17	5.6	4.5	5450550
1/4		20	66	19	6.3	5	5450640
5/16		18	72	22	8	6.3	5450790
3/8		16	80	24	10	8	5450950
7/16		14	85	25	8	6.3	5451110
1/2		13	89	29	9	7.1	5451270
9/16		12	95	30	11.2	9	5451430
5/8		11	102	32	12.5	10	5451590
3/4		10	112	37	14	11.2	5451910
7/8		9	118	38	16	12.5	5452220
1"		8	130	45	18	14	5452540



UNC SPIRAL FLUTE MACHINE TAP

GROUP	GROUND THREAD
Surface Finish	Bright
Type Of Thread	Unified Coarse Thread
Tap Tolerance	Class 2 for 2b Fit
Flute Type	35° Spiral Flute
Material	HSSE-V
Application	For Machine Tapping of Blind Holes

D	NOMINAL DIA.	TPI	L1	L2	D1	A	PART number
No. 6	3.51	32	50	13	3.55	2.8	5460350
No. 8	4.17	32	53	13	4.5	3.55	5460420
No. 10	4.83	24	58	16	5	4	5460480
No. 12	5.49	24	62	17	5.6	4.5	5460550
1/4		20	66	19	6.3	5	5460640
5/16		18	72	22	8	6.3	5460790
3/8		16	80	24	10	8	5460950
7/16		14	85	25	8	6.3	5461110
1/2		13	89	29	9	7.1	5461270
9/16		12	95	30	11.2	9	5461430
5/8		11	102	32	12.5	10	5461590
3/4		10	112	37	14	11.2	5461910
7/8		9	118	38	16	12.5	5462220
1"		8	130	45	18	14	5462540

HSGT TAPS

STRAIGHT FLUTE

UNF

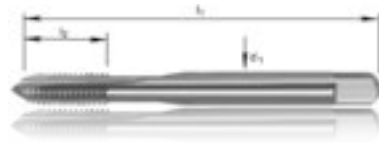


UNF STRAIGHT FLUTE HAND TAP

GROUP	GROUND THREAD
Surface Finish	Bright
Type Of Thread	Unified Fine Thread
Tap Tolerance	Class 2 for 2b Fit
Flute Type	Straight Flutes
Material	HSS
Application	For Hand or Machine Tapping of Through or Blind Holes

D	NOMINAL DIA.	TPI	L1	L2	D1	A	TAPER	INTER	BOTTOM
No. 5	3.18	44	48	11	3.15	2.5	5510321	5510322	5510323
No. 6	3.51	40	50	13	3.55	2.8	5510351	5510352	5510353
No. 8	4.17	36	53	13	4.5	3.55	5510421	5510422	5510423
No. 10	4.83	32	58	16	5	4	5510481	5510482	5510483
No. 12	5.49	28	62	17	5.6	4.5	5510551	5510552	5510553
1/4		28	66	19	6.3	5	5510641	5510642	5510643
5/16		24	69	19	8	6.3	5510791	5510792	5510793
3/8		24	76	20	10	8	5510951	5510952	5510953
7/16		20	82	22	8	6.3	5511111	5511112	5511113
1/2		20	84	24	9	7.1	5511271	5511272	5511273
9/16		18	90	25	11.2	9	5511431	5511432	5511433
5/8		18	95	25	12.5	10	5511591	5511592	5511593
3/4		16	104	29	14	11.2	5511911	5511912	5511913
7/8		14	113	33	16	12.5	5512221	5512222	5512223
1"		12	120	35	18	14	5512541	5512542	5512543
1.1/8		12	127	37	20	16	5512861	5512862	5512863
1.1/4		12	137	37	22.4	18	5513181	5513182	5513183
1.1/2		12	149	39	28	22.4	5513811	5513812	5513813

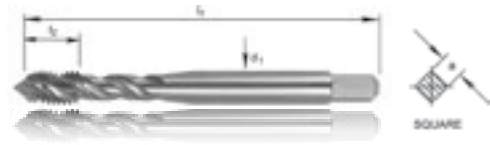
SETS ALSO AVAILABLE



UNF GUN NOSE MACHINE TAP

GROUP	GROUND THREAD
Surface Finish	Bright
Type Of Thread	Unified Fine Thread
Tap Tolerance	Class 2 for 2b Fit
Flute Type	Spiral Point
Material	HSSE-V
Application	For Machine Tapping of Through Holes

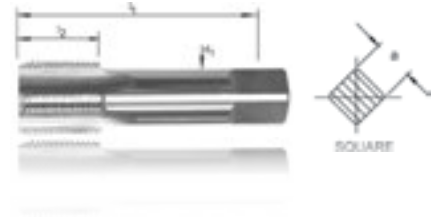
D	TPI	L1	L2	D1	A	PART number
No. 8	36	53	13	4.5	3.55	5550420
No. 10	32	58	16	5	4	5550480
No. 12	28	62	17	5.6	4.5	5550550
1/4	28	66	19	6.3	5	5550640
5/16	24	69	19	8	6.3	5550790
3/8	24	76	20	10	8	5550950
7/16	20	82	22	8	6.3	5551110
1/2	20	84	24	9	7.1	5551270
9/16	18	90	25	11.2	9	5551430
5/8	18	95	25	12.5	10	5551590
3/4	16	104	29	14	11.2	5551910
7/8	14	113	33	16	12.5	5552220
1"	12	120	35	18	14	5552540



UNF SPIRAL FLUTE MACHINE TAP

GROUP	GROUND THREAD
Surface Finish	Bright
Type Of Thread	Unified Fine Thread
Tap Tolerance	Class 2 for 2b Fit
Flute Type	35° Spiral Flute
Material	HSSE-V
Application	For Machine Tapping of Blind Holes

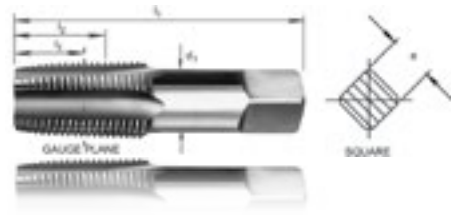
D	TPI	L1	L2	D1	A	PART number
No. 6	40	50	13	3.55	2.8	5560350
No. 8	36	53	13	4.5	3.55	5560420
No. 10	32	58	16	5	4	5560480
No. 12	28	62	17	5.6	4.5	5560550
1/4	28	66	19	6.3	5	5560640
5/16	24	69	19	8	6.3	5560790
3/8	24	76	20	10	8	5560950
7/16	20	82	22	8	6.3	5561110
1/2	20	84	24	9	7.1	5561270
9/16	18	90	25	11.2	9	5561430
5/8	18	95	25	12.5	10	5561590
3/4	16	104	29	14	11.2	5561910



BSP PARALLEL PIPE

GROUP	GROUND THREAD
Surface Finish	Bright
Type Of Thread	Pipe Thread G-series
Tap Tolerance	Bs 949 - 1982 Part 3
Flute Type	Straight Flute
Material	HSS
Application	For Hand or Machine Tapping of Through or Blind Holes

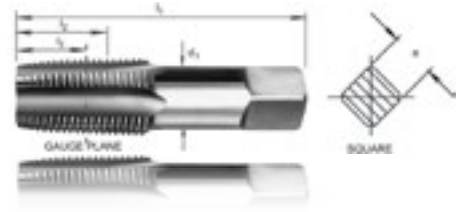
D	NOMINAL DIA.	TPI	L1	L2	D1	A	TAPER	INTER	BOTTOM
1/8	9.728	28	59	15	8	6.3	5710321	5710322	5710323
1/4	13.157	19	67	19	10	8	5710641	5710642	5710643
3/8	16.662	19	75	21	12.5	10	5710951	5710952	5710953
1/2	20.955	14	87	26	16	12.5	5711271	5711272	5711273
5/8	22.911	14	91	26	18	14	5711591	5711592	5711593
3/4	26.441	14	96	28	20	16	5711911	5711912	5711913
7/8	30.201	14	102	29	22.4	18	5712221	5712222	5712223
1"	33.249	11	109	33	25	20	5712541	5712542	5712543
1.1/4	41.910	11	119	36	31.5	25	5713171	5713172	5713173
1.1/2	47.803	11	125	37	35.5	28	5713811	5713812	5713813



BSPT TAPER PIPE TAPS

GROUP	GROUND THREAD
Surface Finish	Bright
Type Of Thread	Pipe Thread Rc Series
Tap Tolerance	Bs 949 - 1982 Part 3
Flute Type	Straight Flute
Material	HSS
Application	For Hand or Machine Tapping of Through or Blind Holes

D	NOMINAL DIA. AT GAUGE PLANE	TPI	L1	L2	L3	D1	A	BOTTOM
1/8	9.728	28	59	15	10.1	8	6.3	5750323
1/4	13.157	19	67	19	15	10	8	5750643
3/8	16.662	19	75	21	15.4	12.5	10	5750953
1/2	20.955	14	87	26	20.5	16	12.5	5751273
3/4	26.441	14	96	28	21.8	20	16	5751913
1"	33.249	11	109	33	26	25	20	5752543
1.1/4	41.91	11	119	36	28.3	31.5	25	5753173
1.1/2	47.803	11	125	37	28.3	35.5	28	5753813
2"	59.614	11	140	41	32.7	40	31.5	5755083



NPT TAPER PIPE TAPS

GROUP	GROUND THREAD
Surface Finish	Bright
Type Of Thread	National Pipe Taper
Tap Tolerance	Ansi B94.9 - 1979
Flute Type	Straight Flute
Material	HSS
Application	For Hand or Machine Tapping of Through or Blind Holes

D	NOMINAL DIA. AT GAUGE PLANE	TPI	L1	L2	L3	D1	A	BOTTOM
1/8	10.272	27	59	15	7.9	8	6.3	5850323
1/4	13.571	18	67	19	11.7	10	8	5850643
3/8	17.054	18	75	21	11.5	12.5	10	5850953
1/2	21.224	14	87	26	14.7	16	12.5	5851273
3/4	26.568	14	96	28	14.4	20	16	5851913
1"	33.228	11.1/2	109	33	17.2	25	20	5852543
1.1/4	41.986	11.1/2	119	36	17.4	31.5	25	5853173

